

STAATSOLIE
HYDROCARBON INSTITUTE

DATA CATALOG

Staatsolie Hydrocarbon Institute

October 2024

Contents

1. Introduction	2
2. Overview of Well data	3
3. Overview 2D Seismic data	4
4. Overview 3D Seismic data	6
5. Overview Gravity and Magnetic data.....	7
6. Overview Technical Reports	8
APPENDIX A: Detailed information included in each well dataset	9
APPENDIX B: Detailed information included in each 2D Seismic dataset.....	10
APPENDIX C: Detailed information included in each 3D Seismic dataset.....	11
APPENDIX D: Detailed information included in the Gravity and Magnetic dataset.....	12

1. Introduction

Staatsolie's policy ensures that all its open-file data is easily accessible and affordable for contractor parties, helping to mitigate risks in their petroleum operations. To support this, a comprehensive catalog has been developed. This catalog allows contractor parties to search, select, and lease specific data sets tailored to their unique needs, enabling them to invest in data that best supports their objectives. The following sections provide detailed information on the available data and instructions on how to obtain it from the catalog.

The data catalog is divided into five sections, each representing a specific type of data set. The data code will be used as a reference when requesting the data:

- Overview wells data
- Overview 2D seismic data
- Overview 3D seismic data
- Gravity & Magnetic data
- Technical reports

To ensure accuracy and relevance, the data catalog will be updated annually.

Staatsolie is committed to maintain the integrity of the catalog, thereby supporting informed decision-making by its contractors.

2. Overview of Well data

Table 1 provides an overview of the well datasets available for lease. The location of the wells is shown in Figure 1.

Detailed information included in each dataset is available in Appendix A.

Code	Data Set	Content				Lease Price (US\$)
		Well Type	Well Name	Well Abbr.	Year	
2-001	Legacy wells	Exploration	Suriname Offshore-1	SO-1	1963	50,000
		Exploration	Coronie Offshore-1	CO-1	1966	
		Exploration	Maroni Offshore-1	MO-1	1966	
		Exploration	Suriname Offshore Nord-1	SON-1	1966	
		Exploration	Galibi Offshore-1	GLO-1	1971	
		Exploration	North Coronie Offshore-1	NCO1	1975	
		Exploration	Demerara-1	A2-1	1977	
		Exploration	B 34-1X	B 34-1X	1982	
		Exploration	I 23-1X	I 23-1X	1982	
		Exploration	L 10-1X	L 10-1X	1982	
		Exploration	K4-1S	K4-1S	1983	
		Exploration	L1-1S	L1-1S	1983	
		Exploration	L3-1S	L3-1S	1983	
		Exploration	L7-1S	L7-1S	1983	
		Exploration	L7-2S	L7-2S	1983	
		Exploration	L 6-1	L 6-1	1983	
		Exploration	K6-2	K6-2	1986	
		Exploration	L5-1	L5-1	1986	
		Exploration	L7-3	L7-3	1986	
		Exploration	L 1-3	L 1-3	1986	
		Exploration	L 8-1	L 8-1	1986	
Exploration	West Tapir-1	WT-1	2008			
Exploration	Caracara-1	CRC-1	2010			
Exploration	Aracari-1	ARC-1	2011			
2-002	Nearshore wells	Exploration	Marai-01	MAR01	2019	5,000
		Exploration	Electric Ray-01 (RD)	ELR01(RD)	2019	
		Exploration	Kankantrie-01	KAN01	2019	
		Exploration	Powisi-01	POW01	2019	
		Exploration	Gonini-01	GON01	2019	
		Exploration	Tukunari-01	TUK01	2019	
2-003	Individual	Exploration	Aitkanti-1ST2	AKT-1ST2	2011	10,000
2-004	Individual	Exploration	Spari-1ST1	SP-1	2015	10,000
2-005	Individual	Exploration	Popokai-1	POP-1	2015	30,000
2-006	Individual	Exploration	Araku-1	ARA-1	2017	10,000

2-007	Individual	Exploration	Kolibrie-1	KOL-1	2017	30,000
2-008	Individual	Exploration	Anapai-1(A)	ANA-1	2018	10,000
2-009	Individual	Exploration	Goliathberg Voltzberg North-1	GVN-1	2021	10,000
2-010	Individual	Exploration	Rasper-1	RAS-1	2022	30,000

Table 1: Overview of Well data

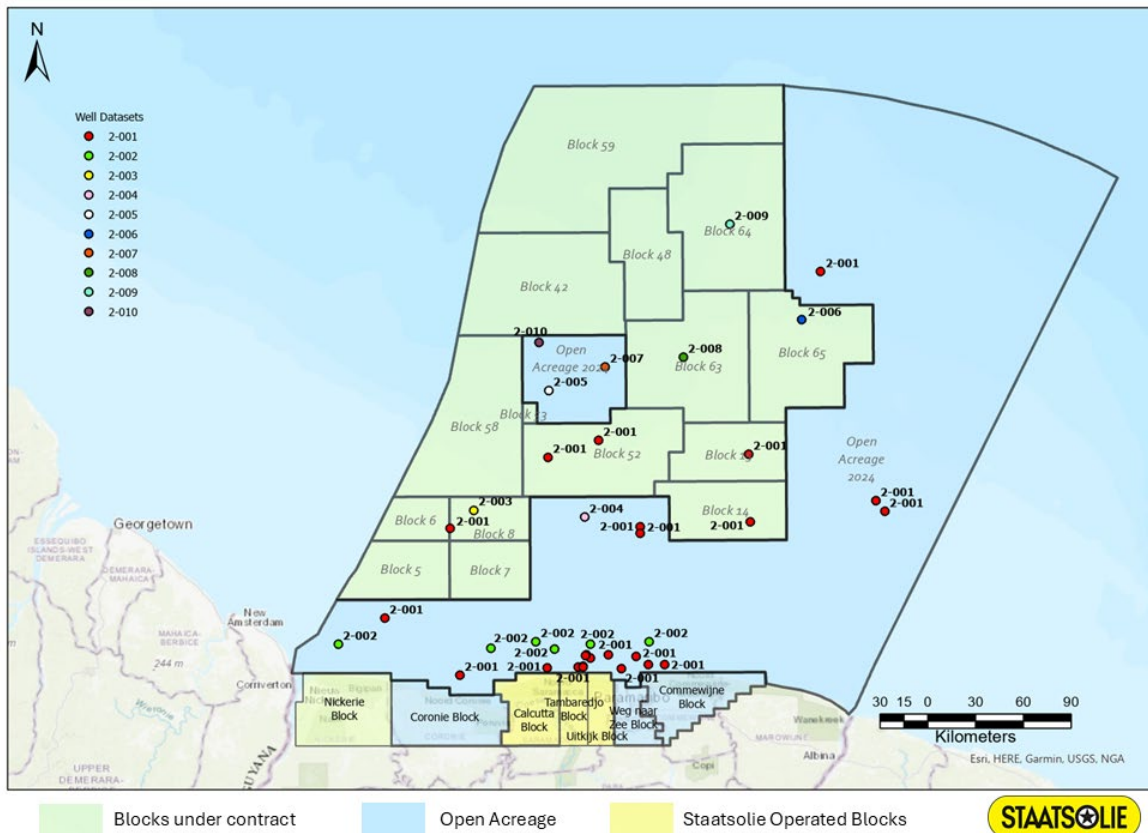


Figure 1: Map showing the well locations

3. Overview 2D Seismic data

Table 2 provides an overview of the 2D Seismic datasets available for lease. The location of the 2D seismic datasets is shown in Figure 2.

Detailed information included in each dataset is available in Appendix B.

Code	Data set	CONTENT				Lease Price (US\$)
		Sub dataset	Year acquired	Year (re)processed	Nr. of lines	
3-001	Regional data set	Dataset 2D 2006 – 1**	1968	2006	9	50,000
		Dataset 2D 2007 – 1	1969	2007	20	
		Dataset 2D 2006 – 2**	1981	2006	36	

		Dataset 2D 2004 – 1	1981	2004	85	
		Dataset 2D 1982 – 1	1982	1982	27	
		Dataset 2D 1983 – 1	1983	1983	21	
		Dataset 2D 1999 – 1	1999	1999	65	
		Dataset 2D 2001 – 1	2001	2001	48	
		Dataset 2D 2001 – 2	2001	2001	6	
		Dataset 2D 2006 – 3**	Various	2006	9	
		Dataset 2D 2006 – 4**	Various	2006	20	
		Dataset 2D 2006 – 5**	Various	2006	29	
		Dataset 2D 2006 – 6**	Various	2006	30	
		Dataset 2D 2006 – 7**	Various	2006	23	
		Dataset 2D 2006 – 8**	Various	2006	23	
		Dataset 2D 2005 – 1	2004	2005	39	
		Dataset 2D 2005 – 2	2004	2005	42	
		Dataset 2D 2006 – 9	2004	2006	79	
		Dataset 2D 2006 – 10	2004	2006	46	
		Dataset 2D 2007 – 2	2004	2007	31	
		Dataset 2D 2007 – 3	2004	2007	80	
		Dataset 2D 2006 – 11	2005	2006	36	
		Dataset 2D 2014 – 1	2012	2014	15	
		Dataset 2D 2014 – 2	2013	2014	2	
3-002	Individual	Dataset 2D 2013 – 1	2011	2013	32	25,000
3-003	Individual	Dataset 2D 2014 – 3	2013	2014	27	10,000

Table 2: Overview of 2D Seismic data

**) These are reprocessed or scanned & digitized lines from various existing surveys

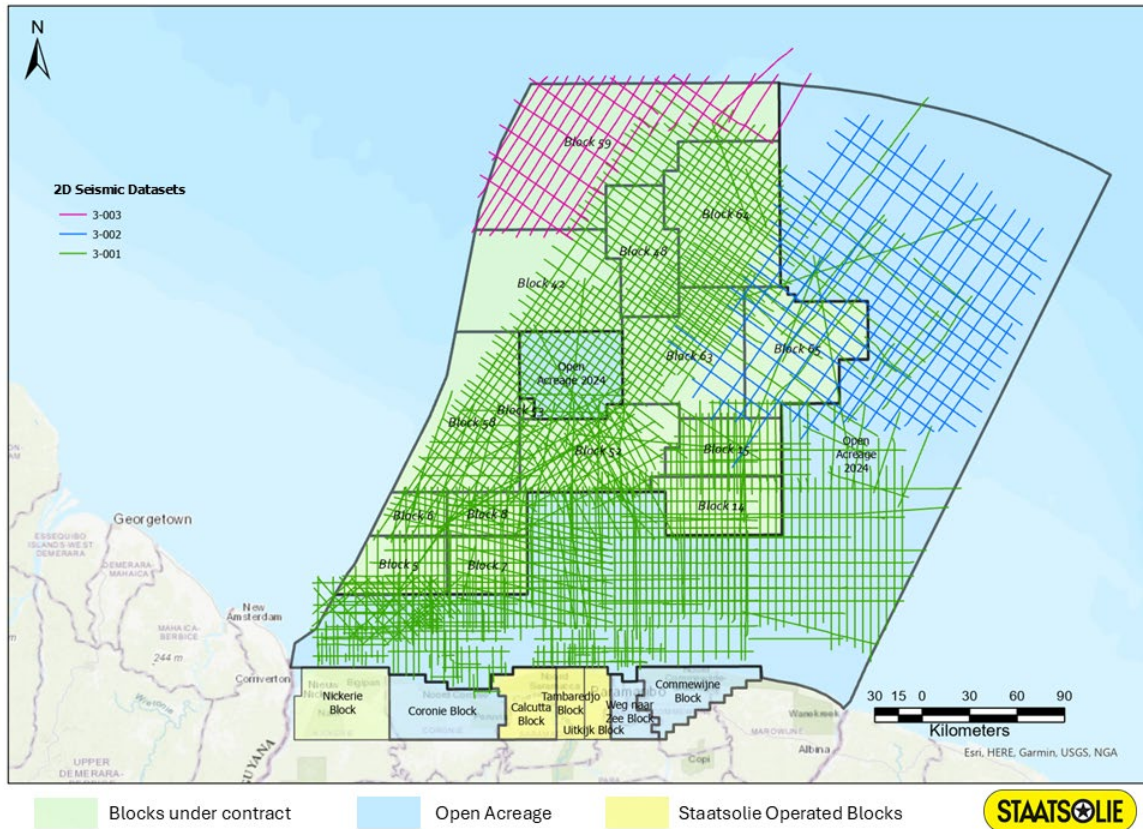


Figure 2: Map showing the location of the 2D datasets

4. Overview 3D Seismic data

Table 3 provides an overview of the 3D Seismic datasets available for lease. The location of the 3D seismic datasets is shown in Figure 3.

Detailed information included in each dataset is available in Appendix C.

Code	Data set	Year acquired	Year (re)processed	Area (sq km)	Lease Price (US\$)
4-001	Dataset 3D 2006 – 1	2005	2006	2881	15,000
4-002	Dataset 3D 2009 – 1	2008	2009	1500	10,000
4-003	Dataset 3D 2010 – 1	2009	2010	1600	10,000
4-004	Dataset 3D 2013 – 1	2012	2013	2785	20,000
4-005	Dataset 3D 2013 – 2	2012	2013	2500	15,000
4-006	Dataset 3D 2012 – 1	2012	2012	100	5,000
4-007	Dataset 3D 2014 – 1	2013	2014	2200	15,000
4-008	Dataset 3D 2014 – 2	2013	2014	2000	50,000
4-009	Dataset 3D 2017 – 1	2016	2017	370	5,000
4-010	Dataset 3D 2016 – 1	2016	2016	4400	30,000

Table 3: Overview of 3D Seismic data

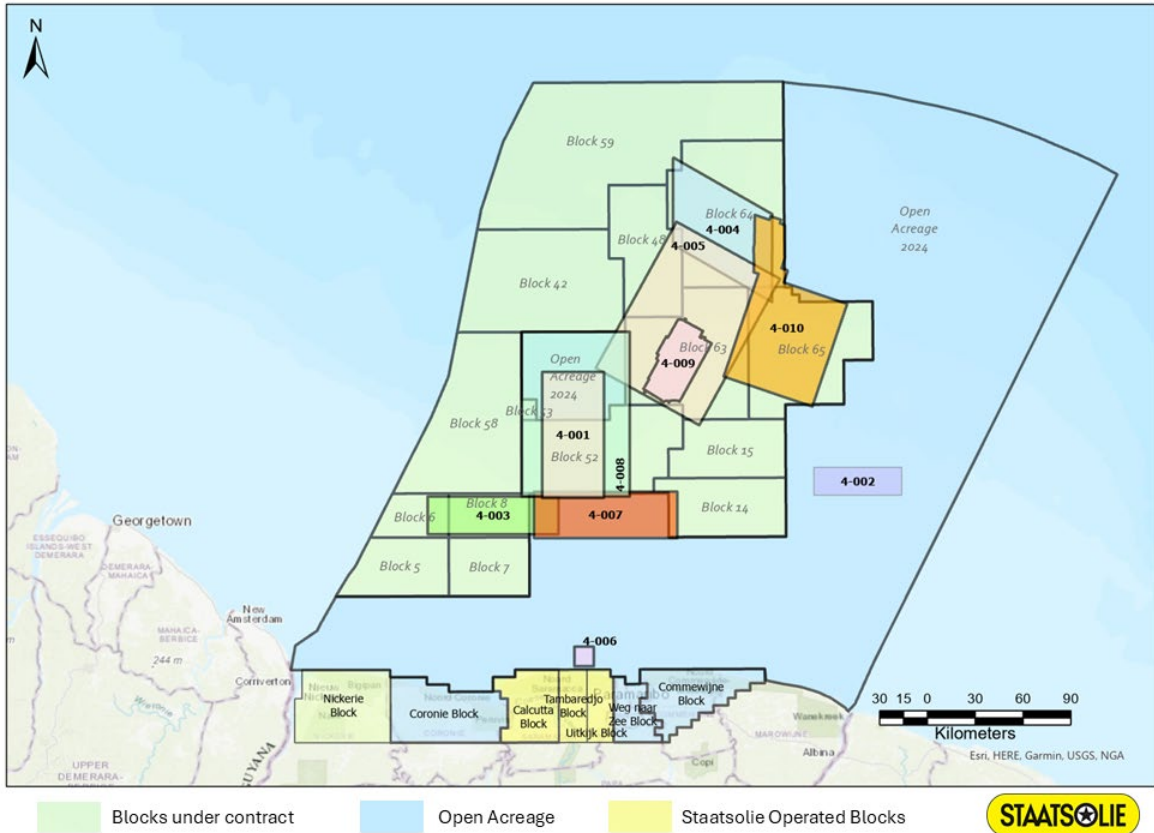


Figure 3: Map showing the location of the 3D datasets

5. Overview Gravity and Magnetic data

Table 4 provides an overview of the Gravity & Magnetic data available for lease. Detailed information included in each dataset is available in Appendix D.

Code	Data set	CONTENT			Lease Price (US\$)
		Gravity & Magnetic survey	Acquired during	Year acquired	
5-001	Regional G&M data set	Dataset 2D UNKN – 1 – GM	2D	NA	15,000
		Dataset 2D UNKN – 2 – GM	2D	NA	
		Dataset 2D 2005 – 1 – GM	2D	2004	
		Dataset 2D 2005 – 2 – GM	2D	2004	
		Dataset 2D 2006 – 9 – GM	2D	2004	
		Dataset 2D 2013 – 1 – GM	2D	2011	
		Dataset 3D 2013 – 1 – GM	3D	2012	
		Dataset 2D 2014 – 3 – GM	2D	2013	
		Dataset 2D 2014 – M1 – GM	2D	Various	

Table 4: Overview of Gravity & Magnetic data

6. Overview Technical Reports

Table 5 provides an overview of the analyses and evaluations, conducted over time by Staatsolie and partners.

Code	Data Set	Content	Lease Price (US\$)
6-001	Gravity & Magnetics 2022	Gravity and Magnetic Interpretation (Report phase 1A) report (Knowledge Bundle) incl Elevation maps, Gravity maps and Magnetic maps, July 2022	15,000
6-002	Sequence Stratigraphy 2022	Sequence Stratigraphy Onshore	40,000
		Sequence Stratigraphy Shallow Water	
		Sequence Stratigraphy Deep Water Demerara	
		Sequence Stratigraphic Frameworks	
6-003	Individual	Structural reconstruction frameworks incl development report and wall maps, November 2022	30,000
6-004	Individual	Gross Depositional Environment mapping (Modelling report), June 2023	25,000
6-005	Individual	Geochemical Oil & Gas Database and Analysis, December 2022	15,000
6-006	Individual	PSM version 1.0: Petroleum System modelling (report), March 2023	25,000
6-007	Individual	PSM version 2.0 Petroleum System modelling (report), February 2024	0

Table 5: Overview of Technical Reports

APPENDIX B: Detailed information included in each 2D Seismic dataset

#	Seismic Data set Data	Dataset 2D	Dataset 2D	Dataset 2D	Dataset 2D	Dataset 2D	Dataset 2D	Dataset 2D	Dataset 2D	Dataset 2D	Dataset 2D	Dataset 2D	Dataset 2D	Dataset 2D	Dataset 2D	Dataset 2D	Dataset 2D	Dataset 2D	Dataset 2D	Dataset 2D	Dataset 2D	Dataset 2D	Dataset 2D	Dataset 2D	Dataset 2D		
		2006-1**	2007-1	2006-2**	2004-1	1982-1	1983-1	1999-1	2001-1	2001-2	2006-3**	2006-4**	2006-5**	2006-6**	2006-7**	2006-8**	2005-1	2005-2	2006-9	2006-10	2007-2	2007-3	2006-11	2014-1	2014-2	2013-1	2014-3
01	Environmental, Social and Management report																										
	EIA/ESIA/IERA															Y	Y	Y							Y		
	Other																										
02	Acquisition																										
	Acquisition report/Field report																	Y	Y					Y		Y	Y
	Positioning report																										Y
	Recording report																										
	QC/Audit report																										
Other																											
03	Processing																										
	(Re)Processing report																		Y	Y		Y		Y (incl in Field report)		Y	Y
04	Products																										
	Pre-stack data																										Y
	Post-stack data																										
	Stack	Y	Y		Y			Y	Y	Y	Y				Y	Y	Y	Y		Y	Y	Y	Y	Y	Y	Y	
	Sub Stack																		Y		Y	Y				Y	
	AVO																										
	Inversion																										
	Velocity		Y																	Y		Y	Y			Y	Y
Other																											
Mixed data (stack, migrated, ..)			Y		Y	Y						Y	Y	Y	Y				Y								
Filters																			Y								

